

Build-A-Box

Modular Aluminum Trench Shield System

Uses: The Build-A-Box™ modular aluminum trench shield system can be assembled in minutes to a wide variety of 2, 3, or 4-sided configurations. This flexibility enables work crews to make on-the-spot design changes to meet job requirements in conditions ranging from light to extreme. Most systems are easily transported in a pick-up truck for quick application. The Build-A-Box™ is also compatible with the XLAP.™

Features:

- Pick-up truck transportable.
- Can be hand assembled in minutes.
- Exclusive corner end posts (same post can be used with 2, 3, and 4 sided configurations).
- Adjustable spreaders.
- Tongue and groove design.
- Foam filled
- Narrow sidewalls.
- Stackable with XLAP.™
- Ultra-light double wall aluminum construction.
- Greatest strength to weight ratio in the industry.
- Sidewalls are smooth to prevent dirt build-up and reduce friction.
- Pulling and lifting lugs.
- Professional Engineer depth certification chart.

Options:

- Sectional corner posts.
- Full length corner posts.
- 4 way corner posts.
- T-post connectors.
- Barrier posts.
- Adjustable legs.
- Splice kit.
- Wheel kit.

Spreader Options:

- Adjustable spreaders.
- Arch spreaders.



1. Transported by Pick-up truck.



2. Panels are set into corner end posts.

BB 2-sided Build-A-Box Aluminum Modular Trench Shield with Sectional Corner Posts					
Ht. x Lg. (ft.)	Weight (Lbs.)	Shield Capacity (PSF)	Depth of Cut (Ft.) Soil Type		
			A	B	C-60
23 BBP	40	2,400	96	53	40
24 BBP	52	2,400	96	53	40
26 BBP	76	2,400	96	53	40
28 BBP	100	1,440	58	32	24
210 BBP	124	960	38	21	16
212 BBP	148	780	31	17	13
214 BBP	170	600	24	13	10
216 BBP	194	480	19	11	8

BB 3 & 4 sided Build-A-Box Aluminum Modular Trench Shield with Sectional Corner Posts					
Width x Lg. (ft.)	Shield Capacity (PSF)	Depth of Cut (Ft.) Soil Type			
		A	B	C-60	
4 x 4	2,160	86	48	36	
4 x 6	2,040	82	45	34	
4 x 8	1,320	53	29	22	
4 x 10	900	36	20	15	
4 x 12	780	31	17	13	
4 x 14	600	24	13	10	
4 x 16	480	19	11	8	
6 x 6	2,040	82	45	34	
6 x 8	1,260	50	28	21	
6 x 10	840	34	19	14	
6 x 12	780	31	17	13	
6 x 14	600	24	13	10	
6 x 16	480	19	11	8	
8 x 8	1,200	48	27	20	
8 x 10	840	34	19	14	
8 x 12	720	29	16	12	
8 x 14	540	22	12	9	
8 x 16	480	19	11	8	
10 x 10	780	31	17	13	
10 x 12	720	29	16	12	
10 x 14	540	22	12	9	
10 x 16	480	19	11	8	
12 x 12	660	26	15	11	
12 x 14	540	22	12	9	
12 x 16	480	19	11	8	
14 x 14	480	19	11	8	
14 x 16	480	19	11	8	
16 x 16	480	19	11	8	



ph: 800-552-8800
 ph: 517-676-8800
 Fx: 517.676.0373
 www.epi-shields.com
 685 Hull Rd. Mason, MI. 48854

AMERICA'S TRENCH BOX BUILDER™

Build-A-Box

Modular Aluminum Trench Shield System



3. Panels are stacked to desired height.



4. Spreaders are pinned in place.



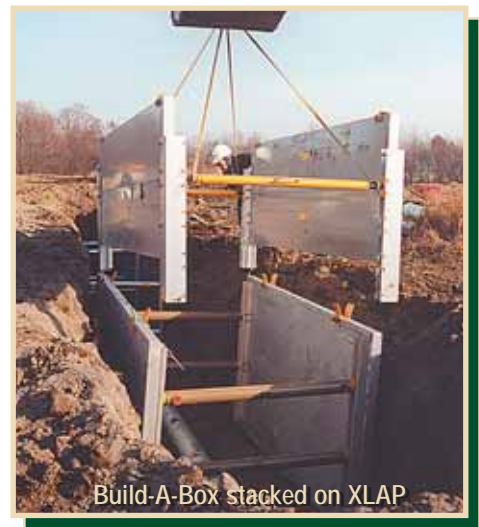
5. Versatility allows for T-connections.

BB 2-sided Build-A-Box Aluminum Modular Trench Shield with Full Length Corner Posts					
Panel Selection Chart		Shield Capacity (PSF)	Depth of Cut (Ft.) Soil Type		
Ht. x Lg. (ft.)	Weight (Lbs.)		A	B	C-60
23 BBP	40	2,400	96	53	40
24 BBP	52	2,400	96	53	40
26 BBP	76	2,400	96	53	40
28 BBP	100	1,440	58	32	24
210 BBP	124	960	38	21	16
212 BBP	148	780	31	17	13
214 BBP	170	600	24	13	10
216 BBP	194	480	19	11	8

BB 3 & 4 sided Build-A-Box Aluminum Modular Trench Shield with Full Length Corner Posts					
Width x Lg. (ft.)	Shield Capacity (PSF)	Depth of Cut (Ft.) Soil Type			
		A	B	C-60	
4 x 4	1,620	65	36	27	
4 x 6	1,320	53	29	22	
4 x 8	1,020	41	23	17	
4 x 10	780	31	17	13	
4 x 12	600	24	13	10	
4 x 14	540	22	12	9	
4 x 16	480	19	11	8	
6 x 6	1,320	53	29	22	
6 x 8	1,020	41	23	17	
6 x 10	720	29	16	12	
6 x 12	600	24	13	10	
6 x 14	540	22	12	9	
6 x 16	480	19	11	8	
8 x 8	1,020	41	23	17	
8 x 10	720	29	16	12	
8 x 12	540	22	12	9	
8 x 14	480	19	11	8	
8 x 16	480	19	11	8	
10 x 10	660	26	15	11	
10 x 12	540	22	12	9	
10 x 14	480	19	11	8	
10 x 16	480	19	11	8	
12 x 12	540	22	12	9	
12 x 14	480	19	11	8	
12 x 16	480	19	11	8	
14 x 14	480	19	11	8	
14 x 16	480	19	11	8	
16 x 16	480	19	11	8	



90 degree configuration



ph: 800-552-8800
 ph: 517-676-8800
 Fx: 517.676.0373
 www.epi-shields.com
 685 Hull Rd. Mason, MI. 48854

AMERICA'S TRENCH BOX BUILDER™